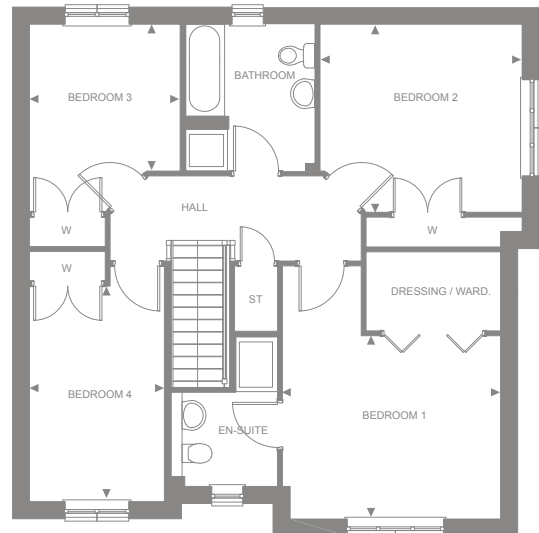
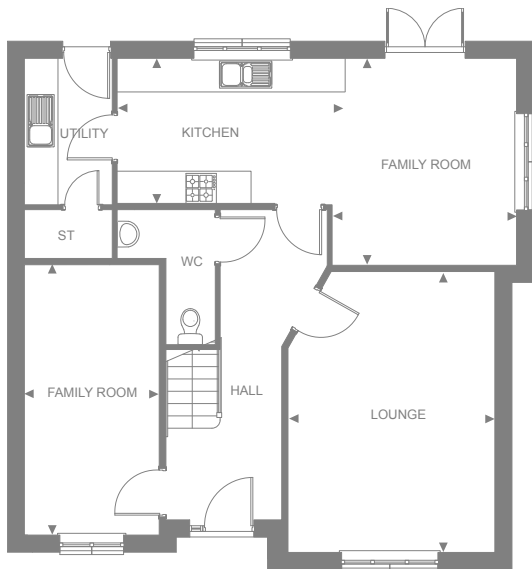




DENNINGTON CORNER

4 BEDROOM

An impressive four-bedroom home that features a spacious lounge, an extended family room with an extra window and a large open plan kitchen with dining area.



Ground Floor

	METRIC	IMPERIAL
Lounge	3.81 x 5.21	12'6" x 17'1"
Kitchen	3.96 x 2.70	12'11" x 8'10"
Dining Area	3.40 x 3.79	11'2" x 12'5"
Family Room	2.49 x 4.98	8'2" x 16'4"

First Floor

	METRIC	IMPERIAL
Bedroom 1	3.82 x 3.38	12'6" x 11'1"
Bedroom 2	3.73 x 3.46	12'3" x 11'4"
Bedroom 3	2.78 x 2.70	9'1" x 8'10"
Bedroom 4	2.49 x 3.97	8'2" x 13'0"

Every care has been taken to ensure the accuracy of the dimensions given above. Please note that the number of steps to the front doors vary, depending on the plot. When barrier-free rear access is required then the French doors are outward opening, if not then they are inward opening. This does not form part of any contract.

