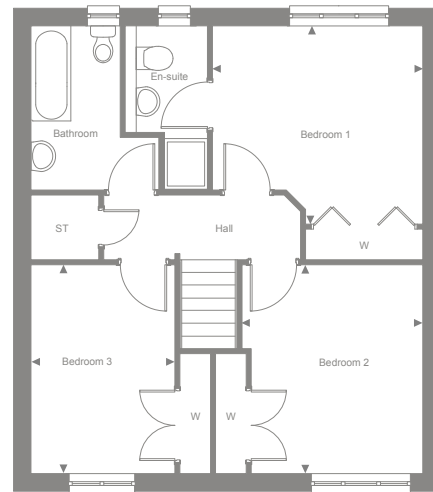
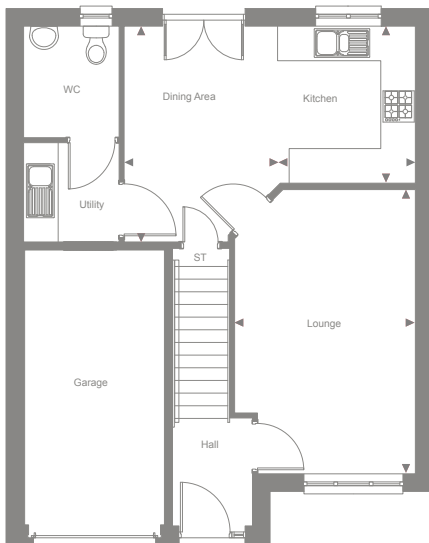




## BELMONT

### 3 BEDROOM

This three-bedroom property packs a punch with everything you need in a new home - from open plan living to spacious bedrooms, all with wardrobes.



#### Ground Floor

	METRIC	IMPERIAL
Lounge	3.22 x 5.10	10'7" x 16'9"
Kitchen	2.37 x 2.82	7'9" x 9'3"
Dining Area	2.80 x 3.87	9'2" x 12'8"

#### First Floor

	METRIC	IMPERIAL
Bedroom 1	3.75 x 3.55	12'4" x 11'8"
Bedroom 2	3.22 x 3.74	10'7" x 12'3"
Bedroom 3	2.58 x 3.74	8'6" x 12'3"

Every care has been taken to ensure the accuracy of the dimensions given above. This does not form part of any contract.

